

## **RUSHEY MEAD COMMUNITY MEETING**

**TUESDAY, 12 NOVEMBER 2024**

**Held at: Rushey Mead Recreation Centre, 215 Gleneagles Avenue, Leicester,  
LE4 7YJ.**

### **ACTION LOG**

Present:

Councillor Dave  
Councillor Karavadra  
Councillor Singh Patel

<b><u>NO.</u></b>	<b><u>ITEM</u></b>	<b><u>ACTION REQUESTED AT MEETING</u></b>
<b>1.</b>	<b>AGENDA</b>	PLEASE SEE ATTACHED.
<b>2.</b>	<b>ACTION LOG</b>	PLEASE SEE ATTACHED.



# Minute Item 2

## ACTION LOG

Ward Community Meeting: Rushey Mead

12<sup>th</sup> November 2024

6:00pm – 8:45pm



### Present

Cllr Bhupen Dave (Chair)  
Cllr Geeta Karavadra  
Cllr Devi Singh Patel  
PC Christopher Bramley  
PSCO Muhammad Khalifa  
PC Shyam Patel  
Rupert Bedder (LCC Highways)  
Alvin Raj (LCC Housing)  
Jethro Swift (LCC City Warden)  
Brain Stafford (LCC Standards & Development)  
WCEO Laura Burt

### Apologies

No apologies were noted.

Item	Action to note	Who
1.	<b>Introductions &amp; Apologies, Declarations</b>	
	<ul style="list-style-type: none"><li>The Chair, Cllr Bhupen Dave welcomed everyone and stated that as the room was booked only until 8.30pm, he will close the meeting at around that time. He requested that to ensure everyone had an opportunity to speak, the contributions should be kept short and to the point.</li><li>No declarations were noted.</li></ul>	
2.	<b>Councillors Feedback</b>	
	<ul style="list-style-type: none"><li>The meeting noted an update from Councillors and the chair added that further updates would also be covered by officers when they do their presentations.</li></ul>	
2.	<b>Rushey Fields Development</b>	
	<ul style="list-style-type: none"><li>The meeting noted a map presentation on the Rushey Fields Recreation Park Development.</li><li>The officer explained the thinking and the vision on how this Park will be developed subject to the availability of resources.</li><li>Residents were asked to e-mail any queries regarding the Rushey Fields Development to <a href="mailto:landscape-development@leicester.gov.uk">landscape-development@leicester.gov.uk</a></li><li>Residents raised queries on the timescales for a walking track. The response was that this will be clarified once the timescales for other developments in the park was confirmed. Residents requested additional benches in the park.</li></ul>	All S&D
3.	<b>Highways update</b>	
	<ul style="list-style-type: none"><li>Residents reported that parents were parking along Peebles Way creating obstructions for drivers. Highways to investigate.</li><li>Residents reported that drains have not been cleared and there is a build-up of leaves along Stafford Street and St Michael Avenue. Highways to follow up.</li><li>A request for a filter lane along Troon Way.</li><li>Residents reported that it was becoming dangerous turning into Hardy's Avenue from Melton Road. Highways to investigate.</li></ul>	Highways Highways Highways Highways

<ul style="list-style-type: none"> <li>Issues raised around cycling and e-scooters on footways. Highways to investigate.</li> <li>Residents raised issues around uneven footpaths across the Ward on Lancashire Street, Selkirk Road and Badminton Road. Highways to investigate.</li> <li>Cyle Lane requested on Barkby Road.</li> <li>Residents requested more street cleaning across the Ward in particular leaf clearing.</li> <li>Request was made for resident car parking scheme on Lancashire Road and St Michaels Avenue</li> </ul>	Highways Highways  Highways/ Cleansing
--	--

4.	City Warden update	
<ul style="list-style-type: none"><li>Residents reported an increase in paan spitting and dog fouling on Stafford Street. Residents requested posters/stencils be installed to inform residents of the implications. City warden to action accordingly.</li><li>Request to extend paan spitting signs to Sainsbury's.</li><li>Salkirk Road, residents reported fly tipping. City Warden to investigate.</li><li>Coatbridge Avenue, residents reported fly tipping. City warden to investigate.</li></ul>		CW  CW CW CW

5.	<b>Housing Update</b>	
<ul style="list-style-type: none"><li>▪ Request for hedges and plants to be trimmed along Lockerby Walk.</li><li>▪ Request for Housing to provide figures on empty properties within Rushey Mead Ward.</li></ul>	Housing Housing	

6.	<b>Police Update</b>	
▪ The meeting noted an update from the Police Team – <b>Appendix 1</b>		

7.	<b>Ward Community Budget</b>	
<ul style="list-style-type: none"><li>The meeting noted a Ward Funding Update. Opening balance: £18,000 Number of applications supported: 17 Balance remaining: £8,745</li></ul>		WCEO

**The meeting closed at 8:45pm**



# Ward Meeting 12<sup>th</sup> November 2024

Rushey Mead Beat Team  
Beat 11

[leics.police.uk](https://leics.police.uk)



Protect vulnerable people



Prevent crime



Deal with those who cause most  
harm



Bring people to justice



Innovate and  
continuously improve

## Rushey Mead Beat Team

Your Local Beat Team currently consists of 1 Sergeant, 3 Police Officers and 1 Police Community Support Officer

### **Sgt 4571 Taylor**

PC 4504 Bramley

PC 4039 Patel

PC 4736 Monohan

PCSO 6043 Khalifa

To regularly view the updates in relation to what your local beat team have been up to please sign up to Neighbourhood Link where we send Monthly Newsletters via email.

Further to this, please feel free to add us on Facebook under East Leicester Police



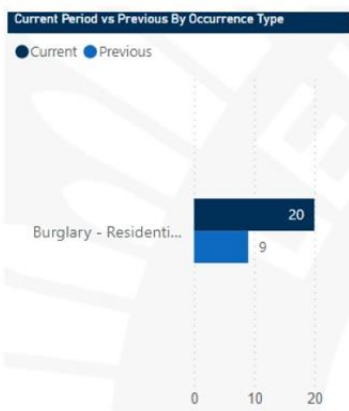
## Rushey Mead Beat 11 – Area Map



Leicestershire Police patrolling area map may differ with Local Council Boundaries

## Crime Figures for Rushey Mead Burglary - Period Last 3 Months (8<sup>th</sup> August – 7<sup>th</sup> November 2024)

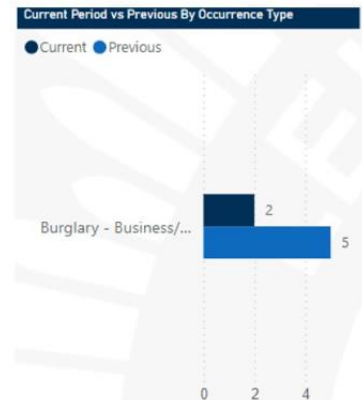
### Residential Home



### Residential Unconnected Building

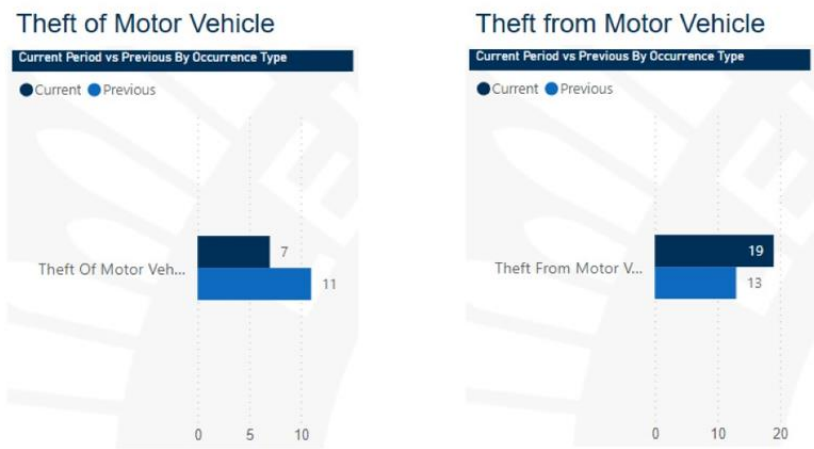


### Business



# Crime Figures for Rushey Mead

## Thefts - Period Last 3 Months (8<sup>th</sup> August – 7<sup>th</sup> November 2024)



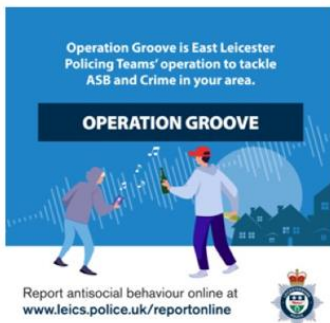
# Crime Figures for Rushey Mead

## Robbery - Period Last 3 Months (8<sup>th</sup> August – 7<sup>th</sup> November 2024)





## Patrols of Rushey Mead



**Op Groove** has been in place to prevent crime and disrupt anti-social behaviour.

Some key areas that the team have been focusing on are:

- Rushey Fields
- Jesse Jackson
- Lockerbie Avenue
- Trevino Drive
- Gilbert Close
- Badminton Road
- Braemar Drive
- Lewisher Road
- Crest Rise
- Waterside Road
- Merlin Road
- Washington Road



## Patrols of Rushey Mead

PCSO 6043 Khalifa completed a **Patch walk** with local agencies which happened on 11<sup>th</sup> September 2024 between the hours of 11:00 -12:00. Present were Cllr Devi Singh Patel, City Warden Jethro Swift and Cleansing Manager Chris Nutting. The local area that was focused on this occasion was Lewisher Road, Crest Rise, Trevino Drive, Gilbert Close, Longhurst Close and surrounding green spaces. This allows agencies to work together, and problem solve local issues.

Local concerns were raised around speeding along Peebles Way and so a **Fatal 4 Road Safety Op** was actioned on 23<sup>rd</sup> August 2024.

- 7 traffic reports were issued in relation to seat belts and mobile phones
  - Words of advice was given around number plates
  - Assistance to a broken-down vehicle
  - Community engagements around parking issues
- The speed gun was used throughout the day and fortunately all road users were abiding by the speed limit.





## Patrols of Rushey Mead

Due to the change of time and the recent events of Navratri, Diwali and Bonfire Night, we have implemented **Darker Safer Night Patrols**. This consists of 1 Police Officer and 1 PCSO. During the AM shift they have been completing patrols in the Rushey Mead and Belgrave area. They also will complete House to House and CCTV enquiries for overnight Burglaries and Thefts of Vehicles. During the PM they will also complete the above and attend live incidents that are being reported during their shift. Your local Neighbourhood Officers will still continue patrol their own local areas alongside **Darker Safer Night Patrols**.

**Badminton Road Neighbourhood Watch Meeting** was attended by PC 4504 Bramley, PC 4736 Monohan and neighbouring PCSO 6670 Hallam and residents of Badminton Road and surrounding streets.

Lots of the issues that were raised on this occasion were mostly council related as per below:

- Sainsburys shopping trolleys
- Rats
- Dog faeces
- Uneven pavement surfaces

Residents were advised and re-directed to the LoveCleanStreet App to report directly to the local council. Safety and security advice was given in relation to their property whilst away during celebrations.

## Patrols of Rushey Mead

Leicestershire Police were contacted by Danni Kennell who is the Education Officer (Air Quality) for Leicester City Council and had arranged a **School Sting Op** at two school, namely Soar Valley College and Herrick Primary School.

This was actioned on 7<sup>th</sup> November 2024 and attended by PC 4504 Bramley, PC 4039 Patel, 2 traffic enforcement officers and 3 members of the local council.

- Two vehicles were given stern advice regarding to parking on double yellows
- Cars were observed regard idling
- Road signs and road markings where the schools are positioned has been raised for consideration



## Patrols of Rushey Mead – Shop thefts

PC 4504 Bramley created a Problem Management Plan in relation to multiple theft stores offences at the Tesco Express, Humberstone Lane. He was assisted by ISA 8400 Jackson who highlighted the high level of theft reports during her CCTV enquiries. She collated and expedited the CCTV images of the suspect who were then identified by local police officers. PC 4504 Bramley was also supported by the beat team and response officers.

As a result of this:

- 3 offenders have been arrested and 2 were remanded to court
- A total of 16 charges of theft from stores
- CBO (Criminal Behaviour Order) has been granted for 1 of the prolific offenders and prevents them from attending any Tesco stores in Leicester



## Crime Reduction Advice

Police recommended company is [Secured by Design - Secured by Design](#)

Secured by Design (SBD) is the official police security initiative that works to improve the security of buildings.

SBD product based accreditation scheme – this provides a recognised standard for all security products that can deter and reduce crime.

[www.securebydesign.com](http://www.securebydesign.com)



Leicestershire Police will regularly update on Facebook crime reduction advice

We would advise residents to secure their property using items such as door alarms, door handle alarms, window alarms, window restrictors, post deflectors, shed or garden alarms, segment timer switch, house alarm, CCTV and property marking using a UV marker pen.



## Neighbourhood Link

Neighbourhood Link is a community messaging service that Leicestershire Police use to provide you with direct updates related to the area of Leicester, Leicestershire and Rutland that you reside in.

### Benefits of signing up:

- Keep updated about police activity in your local area
- A trusted source of the latest crime reduction tips and advice
- Share your views and have your say through our surveys
- Choose to receive updates from partner organisations like Action Fraud

### Remember:

- It is fast to register and free to use
- It is a secure system. We will never share your details without your consent
- You can unsubscribe at any time
- If you're already signed up, get local family and friend involved

Sign up: [www.neighbourhoodlink.co.uk](http://www.neighbourhoodlink.co.uk)







## Crime Reduction

### Opportunities for Crime

Rational-Choice theory states that crimes occur if and when they are easy to commit, and the results are sufficiently rewarding.

Routine-Activity Theory states that for a crime to be committed three inter-related and necessary components must be present.

These are a motivated offender, a suitable target and the absence of a guardian.



Preventative techniques can be organised into three areas.

- Increasing the effort e.g. target hardening
- Increasing the risk e.g. CCTV
- Reducing the rewards e.g. property marking



Leicestershire  
**Police**  
Protecting our communities

## **Practical Crime Prevention**

### **Purse Bells**

Purse bells alert the owner, by making a noise, if someone tries to remove their purse from a bag.



### **Purse Bungee**

Purse Bungees can be used to attach a purse to a bag or clothing so it cannot be snatched.





Leicestershire  
**Police**  
Protecting our communities

### **Slimline Personal Alarm**

These alarms can be worn around the wrist or attached to a keyring.



### **Spikey**

Spikeys fit into the top of the bottle, to reduce the opportunity to spike a drink.







Leicestershire  
**Police**  
Protecting our communities

## **Home Security**

### **Door Alarm**

The alarm sounds when the magnetic contact is broken. There is an on/off switch, if the alarm is only required at certain times of the day.



### **Door Handle Alarm**

The door alarm sounds on the movement or attempted movement of the door handle.





Leicestershire  
**Police**  
Protecting our communities

## Door Sticker

A reminder to be wary of uninvited visitors.



## Memo Alarm

The memo alarm can be used to record a reminder message to a relative. It is activated by an ultra-sonic beam being broken.





Leicestershire  
**Police**  
Protecting our communities

## **Panic Alarm**

This panic alarm is triggered by the door opening, which pulls the pin out of the main unit.



## **Window Alarm**

This alarm is activated by vibration, so by the window being broken or attempted to be opened.





Leicestershire  
**Police**  
Protecting our communities

## Glass Door Sticker

This can be displayed so that people approaching the door can see it. There is a reminder for the householder on the reverse side.



## Post Deflector

The deflector makes it difficult to put an arm or device through a letterbox, to try and steal or unlock the door.





Leicestershire  
**Police**  
Protecting our communities

### Wireless Home Alert Kit

A simple burglar alarm for the house.



### Shed or Garage Alarm

This can be used to alarm outbuildings or caravans. It can be reset using the remote controls.





Leicestershire  
**Police**  
Protecting our communities

### Safe Can

A safe can is an ideal place to hide small valuables, it can then be stored in the kitchen cupboard amongst all the other tins.



### Segment Timer Switch

Timer switches can be used to operate lamps and a radio or TV to give the impression the property is occupied.





## UV Marker Pen

This is a property marking system. Property can be marked with house number and postcode or other contact details. Once it has dried it is only visible under UV light.



For more information contact the crime prevention officers by emailing

[CrimeReduction@leicestershire.pnn.police.uk](mailto:CrimeReduction@leicestershire.pnn.police.uk)

## Further Resources

<https://thecrimepreventionwebsite.com/>

[Welcome to the Crime Reduction Toolkit | College of Policing](#)

